



WARRIOR VILLAGE PROJECT

The Bugle: Vol 2, Issue 11, November 2020

www.WarriorVillageProject.com

PROGRESS REPORT

The business community continued to step forward to support our students and our veterans:

- The [Society of Wood Manufacturing](#) organized the donation of cash and materials from AWFS® members to help Southern California woodworking programs during the pandemic.
- Member companies of the [Association of Woodworking & Furnishings Suppliers](#) (AWFS®) donated \$60,000 in materials to Southern California woodworking programs.
- AWFS® member, [Royal Plywood Co.](#), donated hardwood and laminated panels to SWM effort.

Chris Geldert shipped a "Thank You Plaque" to [Johnson Level & Tool Mfg. Co., Inc.](#) in Wisconsin to show our appreciation for their support of the San Marcos High School Building and Construction program and the Warrior Village Project.



15 November 2020



Woodworking industry rallies to support teachers and students

[See more](#)

15 November 2020



AWFS® members donate materials and cash to woodworking programs

[See more](#)

15 November 2020



Royal Plywood Co. donates over \$50,000 of lumber to woodworking programs

[See more](#)

5 November 2020



We received our Building Permit for our first cottage!

[See more](#)

IN THIS ISSUE

Progress Report	1
VIP Profile	2
School Update	3
Construction Update	4
Partners	5
Sponsors	6
Donate	7
Contacts	7
Subscribe	7

FUTURE EVENTS

Visit our Website:

WarriorVillageProject.com

VIP PROFILE:
Geno G.
A Veteran's Story of Perseverance



[Geno G: The Face of a Veteran Wounded Warrior Homes has helped.](#)

In support of Wounded Warrior Homes' [Full Force for Veterans](#) campaign, we are bringing you the story of one of their recent graduates, Geno G. Gino is typical of the courageous Veterans who enter Wounded Warrior Homes' program needing help and a fresh start to find their path to a successful civilian life.

Geno served four years in the Army as a Combat Medic, and was deployed to both Iraq and Afghanistan. He was awarded a Bronze Star for his heroic actions treating severely wounded soldiers under heavy fire. After his discharge from the Army with a Post-Traumatic Stress Disorder (PTSD) diagnosis, this brave Veteran also grappled with anxiety, depression, nightmares and fear of crowds. He struggled on his own for a few years and, after eventually becoming homeless, he turned to Wounded Warrior Homes for a fresh start.

Gino stayed almost two years in Wounded Warrior Homes' transitional housing program, working on repairing his credit, exploring therapy options for his PTSD and other issues, staying sober and starting back to school. Wounded Warrior Homes was able to help him craft a 'life plan', set goals for his future, and support him on his path. **Click here to learn [Geno's story](#) in his own words.**

Today, Geno has a vehicle and his own apartment and is living independently. He will soon be transferring to a state university to finish his Bachelor of Science in Nursing Degree. His goal is to become a visiting registered nurse, helping other veterans in need. He's well on his way to achieving it!

To help more Veterans like Geno, Wounded Warrior Homes needs YOUR help. Your support will directly change the lives of wounded veterans struggling with Traumatic Brain Injury and/or issues of PTSD. Our goal for Full Force for Veterans is to raise \$50,000 to help Veterans in need in our community. Please help Wounded Warrior Homes by clicking here to donate whatever you can to Wounded Warrior Homes' [Full Force for Veterans](#) campaign..

Thank you, on behalf of:

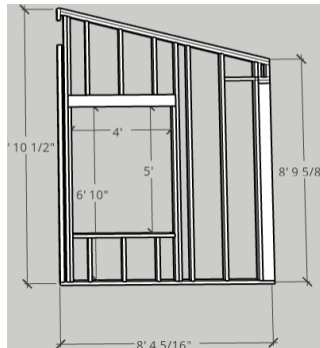
Mia Roseberry
Executive Director & Co-Founder
[Wounded Warrior Homes](#)

SCHOOL UPDATE San Marcos High School

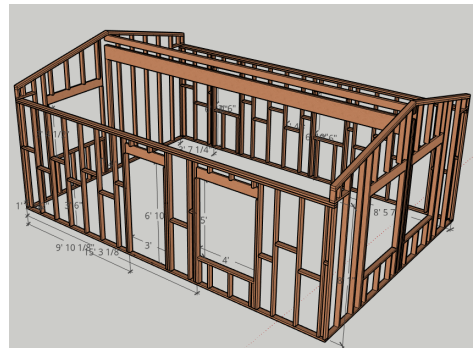
Starting in late October, all of Chris Geldert's students were introduced to building and construction by creating a framing model of our Warrior Village Project cottage using SketchUp 3D Modeling Software.



Long Walls. Front wall on bottom.



Gable Wall.



Orthographic Projection.

SMHS was one of 25 high schools that has benefitted from the generosity of the [Association of Woodworking & Furnishings Suppliers](#) (AWFS) member companies. Through the [Society of Wood Manufacturing](#) (SWM), AWFS members donated \$60,000 in materials to support woodworking programs. Chris received materials to construct models of our cottages in addition to lumber for other projects. SMHS was also one of 19 schools that received a \$500 grant from SWM to buy tools for model kits which included a tape measure, mitre box, custom made mitre saw, glue gun/glue sticks, and scaled wood lumber. On October 28 Chris distributed model kits to 90 students. The scale model build will be a culminating project for all of his first-year students.



Students pick up model kits.



Chris picked up donated materials.



Poplar pieces for models.

SWM President Saúl Martín, VP of Manufacturing at [Architectural Woodworking Company](#) (AWC), worked with teachers to help develop model kits for students. He then cut over 20,000 pieces of poplar to frame model houses and make model furniture.



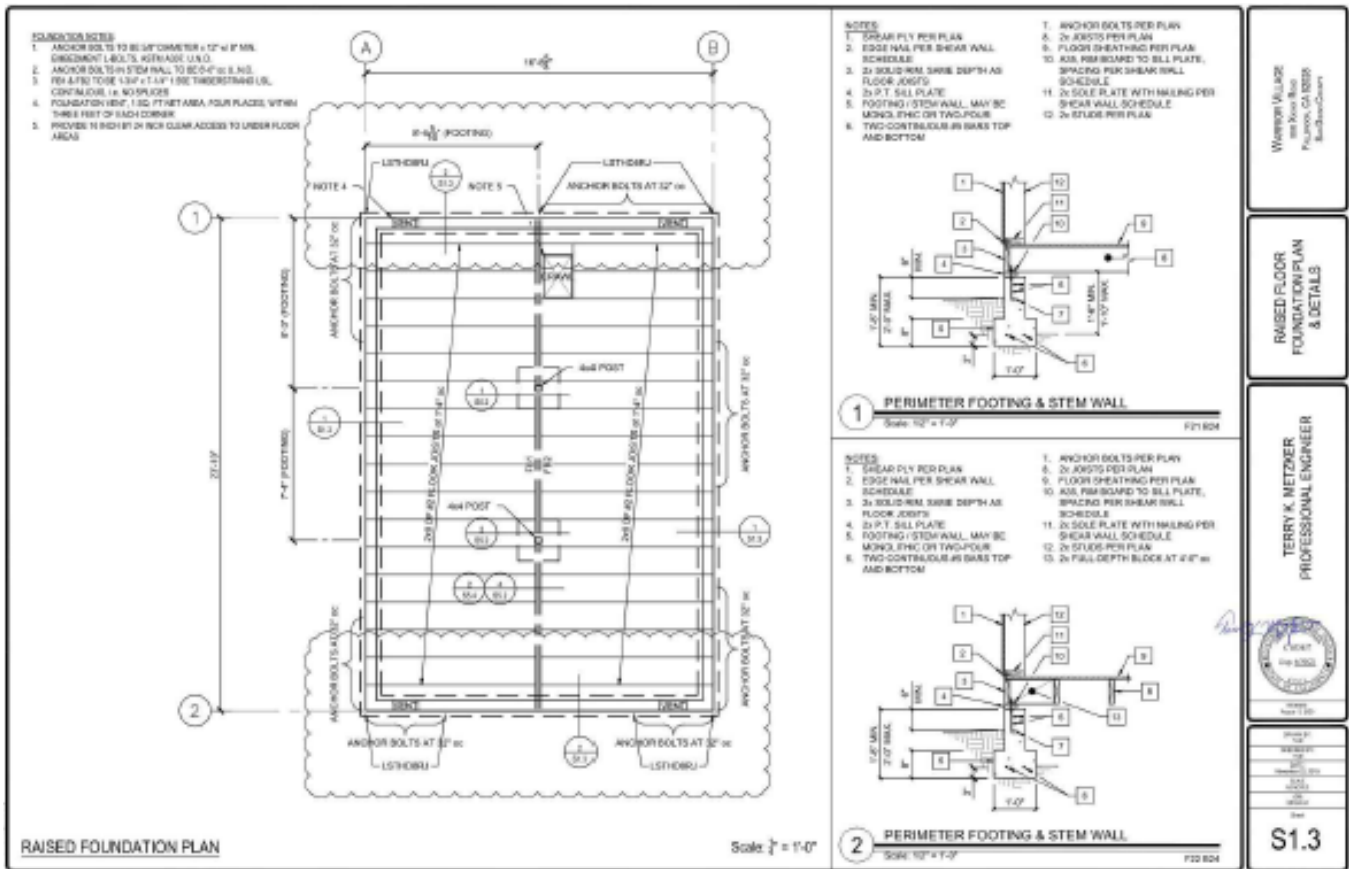
Student's model in process.

CONSTRUCTION UPDATE

Our Building Permit was issued on 5 November for the installation of our first cottage at a [Wounded Warrior Homes](#) site in Vista. We will start site work on 5 December.

Seabees from [Construction Battalion Maintenance Unit 303](#) (CBMU-303) will be on site on 5 December to excavate for the foundation and dig trenches for the utilities using a Mini-Excavator and Walk Behind Trencher donated by [Sunbelt Rentals](#). Rick Hoehn and Rick Millwee of [RM Plumbing](#) will be on site to direct the trenching and lay pipe for the water and propane supply lines and the sewer waste line.

[Associated General Contractors](#) (AGC) Instructors Jon Hill and Larry Paredes will follow up with their apprentices to build the forms for the raised foundation and set the rebar and anchor straps in place. After the County Building Inspector inspects the foundation prep work, Jon and Larry and their apprentices will be back to supervise the pouring of a truck load of concrete donated by [Robertson's Ready Mix](#), install anchor bolts and the mudsill, and finish the concrete.



When we started the construction of our cottages, the intent was for our students to complete 95% of the work on campus before the cottages were transported to their installation sites. As a result of COVID-19, our students haven't been able to work on the cottages since March 12. The remaining work on SM #1, including installation of the siding, insulation, drywall, cabinets, finish carpentry, etc. will now be completed on site by volunteers, including professional contractors.

Students from the BITA II 2020 graduating class didn't get to see their cottages through to completion. But, we are hoping that a crew of them will be able to help us finish SM #1 on site in Vista. As an inducement, the Seabees have offered to teach our 2020 BITA II graduates how to operate the Mini-Excavator and Walk Behind Trencher.

PARTNERS

Association of Woodworking & Furnishings Suppliers Society of Wood Manufacturing

The [Association of Woodworking & Furnishings Suppliers](#) (AWFS®) is the largest national trade association in the U.S. representing the interests of the broad array of companies that supply the home and commercial furnishings industry. The international, corporate membership of AWFS® includes manufacturers and distributors of machinery, hardware, lumber, upholstery materials, bedding components, plastics, wood products and other supplies to furnishings and wood products manufacturers.

One of the primary goals of AWFS® is to strengthen and develop industry education. Since its inception, AWFS® has donated millions of dollars toward educational programs and scholarships to the next generation of industry leaders. Launched in 2017, the [Society of Wood Manufacturing](#) (SWM), a chapter of AWFS®, started focusing on supporting high school woodshop programs in Southern California. Saul Martin, VP of Manufacturing for the [Architectural Woodworking Company](#) and SWM founding President says: *"We look forward to making a positive impact with local educational woodworking programs."*

In July, SWM identified a challenge that many high school woodworking teachers would soon face as the new school year began: how to teach woodworking while students are distance learning. SWM decided to reallocate their budget and resources towards helping as many teachers and students as they could in this new, challenging educational environment. Three main issues were identified in which SWM could provide support: procuring wood materials for students, securing tools and supplies for students, and assisting teachers in preparing the materials and tool kits.

SWM requested donations, and the following AWFS® member companies responded quickly and generously: [Royal Plywood](#): two trucks of hardwood and panel material; [Roseburg Forest Products](#): lumber and a financial contribution; [Bessey Tools](#): spring clamps; [EB Bradley](#): sandpaper, glue bottles, safety glasses; [WEIMA](#): cutting tools; [Rubio Monocoat](#): individual bottles of finish; [Colonial Saw](#): Lamello glue bottles; [Franklin Adhesives](#): Titebond wood glue; [Kemp Hardware](#): drawer hardware; [SkillsUSA CA](#) State Director Clay Mitchell: financial contribution, and; [SWM](#): tape measures.

SWM collected and distributed about \$60,000 in donated wood materials and supplies and also awarded nineteen \$500 grants to California teachers for distance learning supplies. In total, the efforts of SWM and AWFS® member companies are expected to impact well over 1,000 woodworking students from twenty-five high school programs in Southern California.



The wood products manufacturing industry, consisting of thousands of companies ranging from small businesses to large corporations, has jobs but needs applicants. The industry needs support to re-establish the value of careers in manufacturing. AWFS® seeks Perkins funding, apprenticeship programs, and other legislation to support a skilled workforce. Specifically, AWFS® works to:

- Secure and increase funding for the Carl D. Perkins Career and Technical Education Act to ensure a new stream of prepared workers coming out of K12 and community colleges
- Coordinate efforts with the Department of Labor's Apprenticeship Task Force and encourage alternative apprenticeship opportunities for small businesses
- Participate in Congressional Caucuses on Career Technical Education
- Seize every opportunity to positively portray Career Technical Education and manufacturing careers

SPONSORS

The Warrior Village Project is a community effort. To succeed, we need the community's support. We have been receiving a tremendous response to our pleas for help from individuals and businesses.



Lumber collected by the [Society of Wood Manufacturing](#) (SWM) for school woodworking programs was distributed from the [Architectural Woodworking Company](#) (AWC) plant in Monterey Park, CA. Saul Martin, VP of Manufacturing for AWC, opened the plant to woodworking teachers on three Saturdays so that they could load their trucks and trailers with wood to take back to their schools. "SWM wanted to do something that would impact as many woodworking students as possible", says Martin. *This was when the teachers really needed some help from industry to boost their woodworking program."*

Member companies of the [Association of Woodworking & Furnishings Suppliers](#) (AWFS®) are big supporters and advocates for Career Technical Education (CTE) programs. AWFS® companies partner with high schools with the intention of hiring students at graduation; offer internships and teacher externships; visit schools as guest speakers, and; open company operations for school tours.

AWFS® has supported the [SkillsUSA](#) organization for many years with the donation of materials and the time commitment of industry professionals. In 2017 the [Society of Wood Manufacturing](#) (SWM), a chapter of AWFS, was created to increase industry support to high school woodshop programs in Southern California.



One of the AWFS® member companies who answered SWM's call for donations to support school woodworking programs was [Royal Plywood Co.](#) of Cerritos, California. The company contributed over \$50,000 in materials. Arriving in two flatbed trucks, it included laminated panels and multiple species of hardwood. They also shipped materials from [Roseburg Forest Products](#) in Oregon. Dave Golling, Vice President of Business Development at Royal Plywood said: "We are just thrilled that we could help out the local high school students by donating some of the materials we have in stock. We think this is a great program and will make a real difference for the woodworking teachers and students."

Our Building Permit for the installation of our first cottage at a [Wounded Warrior Homes](#) residence in Vista was issued on 5 November 2020, exactly 6 months from the day that the County of San Diego logged our plans into it's tracking system. This kicks off the next phase of our project, starting the site work. Starting on 5 December, a team of [Seabee](#) volunteers from the [Construction Battalion Maintenance Unit 303](#) (CBMU-303) will do excavation and trenching work for the foundation and utility services. Rick Hoehn and Rick Millwee from [RM Plumbing](#) will be back to supervise trenching operations and lay plumbing lines. Under the supervision of [Associated General Contractor](#) (AGC) Instructors Jon Hill and Larry Paredes, AGC apprentices will build forms for the foundation, install rebar, supervise the pouring of the concrete, install anchor bolts and finish the concrete.

AGENCY STAMPS	
<p>VISTA FIRE PROTECTION DISTRICT 1. ACCEPTED AS SHOWN 2. ACCEPTED AS SHOWN WITH THE DEPARTMENT OF CONSTRUCTION 3. DEPARTMENT OF CONSTRUCTION 4. DEPARTMENT OF CONSTRUCTION 5. DEPARTMENT OF CONSTRUCTION 6. DEPARTMENT OF CONSTRUCTION 7. DEPARTMENT OF CONSTRUCTION 8. DEPARTMENT OF CONSTRUCTION 9. DEPARTMENT OF CONSTRUCTION 10. DEPARTMENT OF CONSTRUCTION 11. DEPARTMENT OF CONSTRUCTION 12. DEPARTMENT OF CONSTRUCTION 13. DEPARTMENT OF CONSTRUCTION 14. DEPARTMENT OF CONSTRUCTION 15. DEPARTMENT OF CONSTRUCTION 16. DEPARTMENT OF CONSTRUCTION 17. DEPARTMENT OF CONSTRUCTION 18. DEPARTMENT OF CONSTRUCTION 19. DEPARTMENT OF CONSTRUCTION 20. DEPARTMENT OF CONSTRUCTION 21. DEPARTMENT OF CONSTRUCTION 22. DEPARTMENT OF CONSTRUCTION 23. DEPARTMENT OF CONSTRUCTION 24. DEPARTMENT OF CONSTRUCTION 25. DEPARTMENT OF CONSTRUCTION 26. DEPARTMENT OF CONSTRUCTION 27. DEPARTMENT OF CONSTRUCTION 28. DEPARTMENT OF CONSTRUCTION 29. DEPARTMENT OF CONSTRUCTION 30. DEPARTMENT OF CONSTRUCTION 31. DEPARTMENT OF CONSTRUCTION 32. DEPARTMENT OF CONSTRUCTION 33. DEPARTMENT OF CONSTRUCTION 34. DEPARTMENT OF CONSTRUCTION 35. DEPARTMENT OF CONSTRUCTION 36. DEPARTMENT OF CONSTRUCTION 37. DEPARTMENT OF CONSTRUCTION 38. DEPARTMENT OF CONSTRUCTION 39. DEPARTMENT OF CONSTRUCTION 40. DEPARTMENT OF CONSTRUCTION 41. DEPARTMENT OF CONSTRUCTION 42. DEPARTMENT OF CONSTRUCTION 43. DEPARTMENT OF CONSTRUCTION 44. DEPARTMENT OF CONSTRUCTION 45. DEPARTMENT OF CONSTRUCTION 46. DEPARTMENT OF CONSTRUCTION 47. DEPARTMENT OF CONSTRUCTION 48. DEPARTMENT OF CONSTRUCTION 49. DEPARTMENT OF CONSTRUCTION 50. DEPARTMENT OF CONSTRUCTION 51. DEPARTMENT OF CONSTRUCTION 52. DEPARTMENT OF CONSTRUCTION 53. DEPARTMENT OF CONSTRUCTION 54. DEPARTMENT OF CONSTRUCTION 55. DEPARTMENT OF CONSTRUCTION 56. DEPARTMENT OF CONSTRUCTION 57. DEPARTMENT OF CONSTRUCTION 58. DEPARTMENT OF CONSTRUCTION 59. DEPARTMENT OF CONSTRUCTION 60. DEPARTMENT OF CONSTRUCTION 61. DEPARTMENT OF CONSTRUCTION 62. DEPARTMENT OF CONSTRUCTION 63. DEPARTMENT OF CONSTRUCTION 64. DEPARTMENT OF CONSTRUCTION 65. DEPARTMENT OF CONSTRUCTION 66. DEPARTMENT OF CONSTRUCTION 67. DEPARTMENT OF CONSTRUCTION 68. DEPARTMENT OF CONSTRUCTION 69. DEPARTMENT OF CONSTRUCTION 70. DEPARTMENT OF CONSTRUCTION 71. DEPARTMENT OF CONSTRUCTION 72. DEPARTMENT OF CONSTRUCTION 73. DEPARTMENT OF CONSTRUCTION 74. DEPARTMENT OF CONSTRUCTION 75. DEPARTMENT OF CONSTRUCTION 76. DEPARTMENT OF CONSTRUCTION 77. DEPARTMENT OF CONSTRUCTION 78. DEPARTMENT OF CONSTRUCTION 79. DEPARTMENT OF CONSTRUCTION 80. DEPARTMENT OF CONSTRUCTION 81. DEPARTMENT OF CONSTRUCTION 82. DEPARTMENT OF CONSTRUCTION 83. DEPARTMENT OF CONSTRUCTION 84. DEPARTMENT OF CONSTRUCTION 85. DEPARTMENT OF CONSTRUCTION 86. DEPARTMENT OF CONSTRUCTION 87. DEPARTMENT OF CONSTRUCTION 88. DEPARTMENT OF CONSTRUCTION 89. DEPARTMENT OF CONSTRUCTION 90. DEPARTMENT OF CONSTRUCTION 91. DEPARTMENT OF CONSTRUCTION 92. DEPARTMENT OF CONSTRUCTION 93. DEPARTMENT OF CONSTRUCTION 94. DEPARTMENT OF CONSTRUCTION 95. DEPARTMENT OF CONSTRUCTION 96. DEPARTMENT OF CONSTRUCTION 97. DEPARTMENT OF CONSTRUCTION 98. DEPARTMENT OF CONSTRUCTION 99. DEPARTMENT OF CONSTRUCTION 100. DEPARTMENT OF CONSTRUCTION</p>	
<p>PROJECT DESCRIPTION PROJECT OF AN EXISTING SPD AND THIS PLAN IS FOR A PROPOSED 400 SQ. FT. ADU MANUFACTURED BY STUDENTS AT SAN MARCOS HIGH SCHOOL. THE TWO COMPLETED HALVES ARE TRUCKED TO THE SITE TO BE PLACED ONTO A PERMITTED AND INSPECTED FOUNDATION. NO GRADING REQUIRED.</p>	
<p>WARRIORVILLAGE FALLBROOK, CA 92038 CONTACT: MARK FLOCHER</p>	
<p>T1.0</p>	

DONATE TO THE WARRIOR VILLAGE PROJECT

We can provide truly affordable, permanent housing. But, we can't do it for free. To succeed, we need financial support. The materials required to build our cottages cost about \$25,000 per cottage. It will cost about \$10,000 to transport a cottage to its installation site. The cost of installing a cottage as an Accessory Dwelling Unit will depend on the site. But, it should cost about \$30,000 per cottage. Hence, we can provide permanent housing for a veteran for about \$65,000 per unit. This is a bargain compared to the cost of government supported 'affordable' housing projects. According to the [Turner Center for Housing Innovation](#) at UC Berkeley, it cost an average of \$480,000 (\$700/sq ft) to build one unit of affordable housing in California under the Low-Income Housing Tax Credit (LIHTC) program.

Donors who wish to donate for the construction of our cottages at San Marcos High School can make a contribution through our fiscal sponsor, [The San Marcos Promise](https://thesanmarcospromise.org/donate/#ways-to-donate) (<https://thesanmarcospromise.org/donate/#ways-to-donate>), a 501(c)(3) nonprofit.

- **Online Donations:** When you donate online, please '*Leave A Comment*' indicating that your donation is for the Warrior Village Project.
- **Donations by Check:** Mail your check, made payable to The San Marcos Promise, to:

**The San Marcos Promise
255 Pico Avenue, Suite 103
San Marcos, CA 92069**

Please write on the Check's Memo Line that your donation is for the Warrior Village Project.

If you would like more information on the Warrior Village Project and our Partners, please visit our website, WarriorVillageProject.com, or send an email to Mark.L.Pilcher@gmail.com.

Please help us to provide affordable, permanent housing for homeless veterans while training the next generation of homebuilders.

PROJECT CONTACTS

Volunteer..... Mark L. Pilcher 760-666-0077 ... Mark.L.Pilcher@gmail.com
BIA San Diego County..... Mike McSweeney ... 858-514-7004 ... MMcSweeney@biasandiego.org
BITA Program Director Jill Herman 916 412-7118 .. JHerman@mychf.org
SMHS BITA Instructor Chris Geldert..... 760 390 2388 .. Chris.Geldert@SMUSD.org
SMHS Assistant Principal.. Barry Zeait 760-290-2204 .. Barry.Zeait@SMUSD.org
The San Marcos Promise .. Lisa Stout..... 760-290-2373 .. Lisa@TheSanMarcosPromise.org

SUBSCRIBE TO OUR NEWSLETTER

If you would like to receive future editions of our Newsletter via email, please send an email to Mark.L.Pilcher@gmail.com. Thank you for your interest and support.